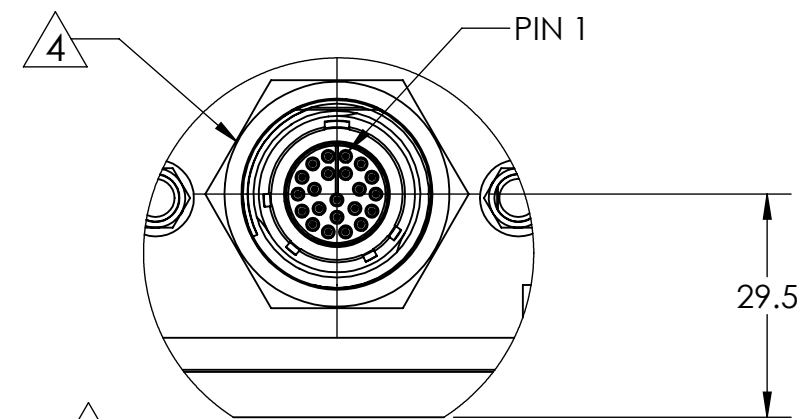
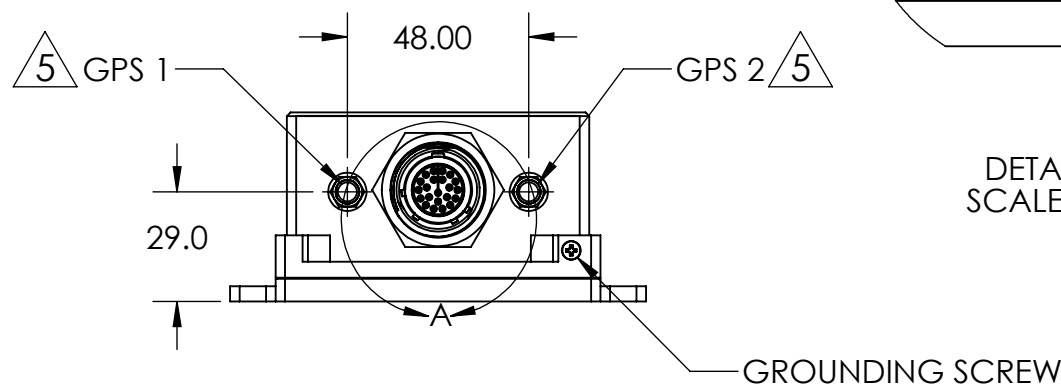
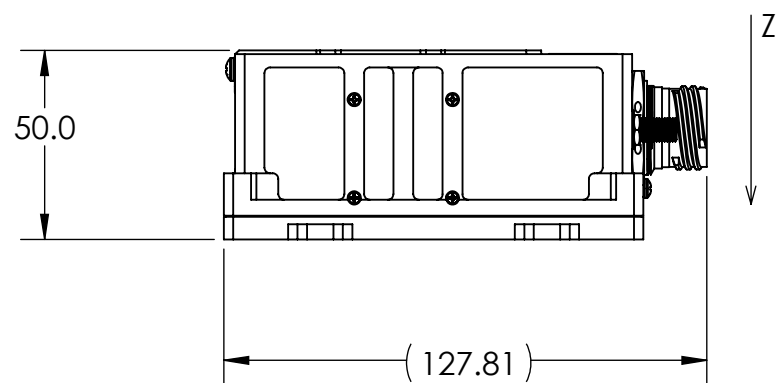
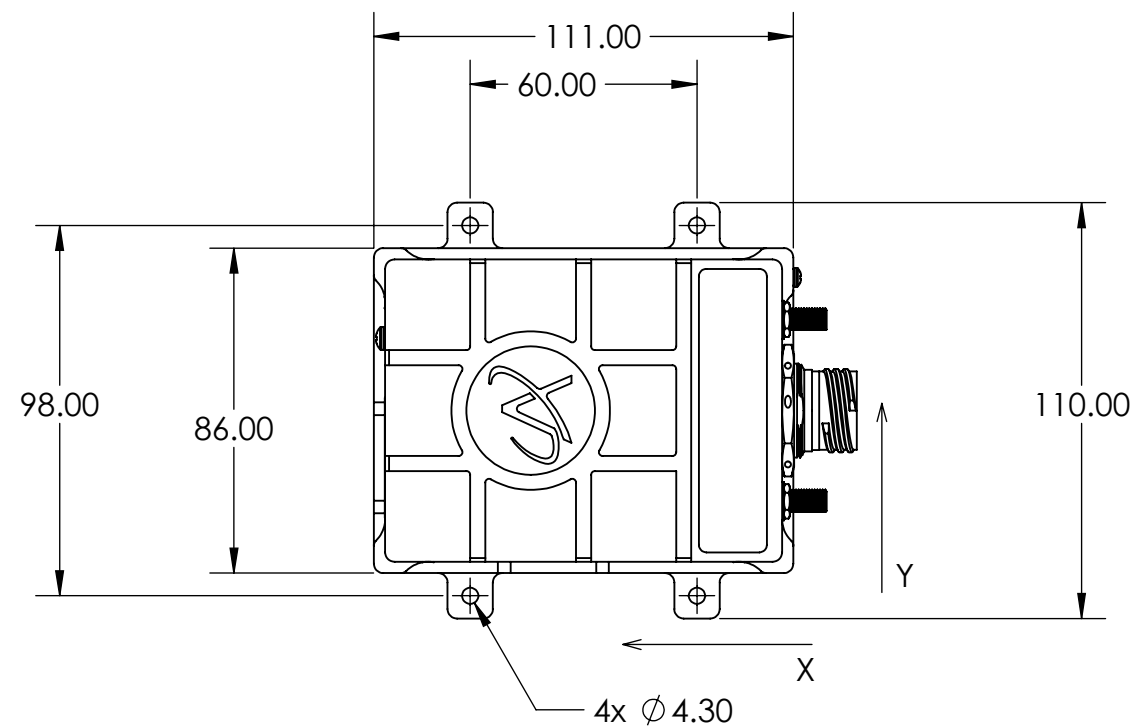


THE INFORMATION IN THIS DRAWING IS THE SOLE PROPERTY OF ANELLO PHOTONICS LLC. ANY REPRODUCTION IN PART OR WHOLE WITHOUT THE WRITTEN PERMISSION OF ANELLO PHOTONICS LLC, IS PROHIBITED

REVISIONS				
ZONE	REV.	DESCRIPTION	DATE	APPROVED
	1	INITIAL RELEASE	4/13/2026	C. WAGNER



DETAIL A
SCALE 1:1

CONNECTOR PIN OUT			
PIN #	DESCRIPTION	PIN #	DESCRIPTION
1	BIT	12	RS-232 2 RX
2	GND 1	13	GND 2
3	RS-232 1 RX	14	SYNC
4	RS-232 1 TX	15	ETH RD N
5	CAN P	16	ETH RD P
6	CAN N	17	POW GND 1
7	PPS1	18	POW VIN 1
8	nRESET	19	POW GND 2
9	NC	20	ETH TD P
10	NC	21	ETH TD N
11	RS-232 2 TX	22	POW VIN 2

NOTES, UNLESS OTHERWISE SPECIFIED:

- DIMENSIONS AND TOLERANCES ARE IN ACCORDANCE WITH ASME Y14.5M-1994.
- INTERPRET DRAWING IN ACCORDANCE WITH ASME Y14.100.
- THIS IS A CAD GENERATED PART. FOR DIMENSIONAL OR ANY INFORMATION NOT SHOWN ON THIS DRAWING, ANALYZE THE CAD MODEL.
- CONNECTOR: AMPHENOL D38999/24WC35PN
MATING CONNECTOR: AMPHENOL D38999/26WC35SN
- CONNECTOR: AMPHENOL 132422-10
MATING CONNECTOR: MALE SMA
- APPROXIMATE WEIGHT: 460 g (1.0 LB)

UNLESS OTHERWISE SPECIFIED LINEAR DIMENSIONS ARE IN mm AND (INCHES)	
TOLERANCES ARE:	ANGLES
LINEAR .X ± 0.4 (0.015) .XX ± 0.25 (0.010)	± 0.1
MATL	ALUMINUM 6061-T6
FINISH	RED ANODIZE PER MIL-A-8625, TYPE II
UNLESS OTHERWISE SPECIFIED INTERPRET DRAWING PER ASME Y14.5	

SOLIDWORKS GENERATED DRAWING DO NOT MANUALLY UPDATE	
DO NOT SCALE DRAWING	
DWN	DATE
C. WAGNER	2026 APR 13
THIRD ANGLE PROJECTION	

ANELLO 4699 Old Ironsides Dr Santa Clara, CA 95054	
TITLE: SPECIFICATION CONTROL DRAWING, AERIAL INS	
SIZE	DWG. NO.
B	10001601
SCALE: 1:2	REV 1
SHEET 1 OF 1	